

INSTRUCTION MANUAL

XM-5000 VRA **RF**

SERIES II

REV 7F

PACKAGE CONTENTS

- 2-Rectangular Plexiglass Boxes
- 1-Wireless Remote Control (REM-5000)
- 2- DC 9 Volt Power Adapter (ADA-13)
- 1-Power Splitter Y-Cord (CAB-66)
- 2-14' Exten Power Cables (CAB-010)
- 1-RF Receiver Module
- 2-3.5mm M-M Cable 12 Foot (CAB 012)



REMOTE CONTROL
(REM-5000 **RF**)



14' POWER EXTENSION CABLES (CAB-010)
POWER Y-CORD (CAB-66)
3.5mm Cables 6'/12' (CAB-012)



DC 9 VOLT
ADAPTER

RF RECEIVER
MODULE

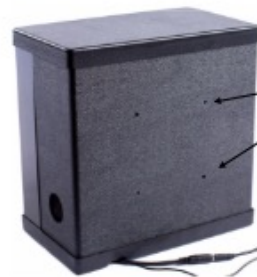


ALL-ON NEW DISTRACTION FEATURE (SEE PAGE 2)

STEP ONE: Position each Reinforcer box over or near the left and right sound field speakers.

Mounting these boxes to the wall of the sound room can be done by one of these four options:

- 1) Using optional Dual Arm mounting brackets (DUA-001)
- 2) Using self tapping screws through predrilled holes on back of box
- 3) Using Velcro or double back tape to mount to top of loudspeakers.
- 4) Use optional corner mounting brackets (INS-KIT2) for mounting boxes in the corners of the sound booths.

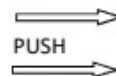


Use mounting holes on back of box to screw to wall or use mounting brackets

STEP TWO: Insert cables for power into bottom of each VRA box connector block. (See LEGEND) Insert 3.5mm cables from RF RECEIVER MODULE into IR SENSOR (blue) jack underneath each reinforcer box.

STEP THREE: Mount centering box in between units onto wall using self tapping screws through the eyelet holes in back of box or double back tape to hold into position.

LED BLINKS WHEN CONNECTED & ACTIVATED



PUSH



POWER COAX
2.1mm



3.5mm
Plug

LEGEND

- Volume DOWN Button*
- Volume UP Button*
- POWER-Coax Silver (2.1)
- RF SENSOR-BLUE
- CENTER BOX -RED (RCA)
- WIRED OUTPUT-BLACK
- WIRED INPUT-BLACK

*Volume can only be adjusted when unit is not activated.

REMOTE CONTROL OPERATION

SOUNDS

- 1) Monkey
- 2) Cartoon Laugh
- 3) Boing
- 4) Tuba
- 5) Goofy Laugh
- 6) Duck
- 7) Hyena
- 8) Chimpmonk
- 9) Rooster
- 10) Kid Laughing
- 11) Mute

SOUNDS-

Activates 10 different sound effects

CYCLE TIME-

Activates system for 4 seconds ON 8me

LEFT-

Activates Le; box

PATTERN-

Selects LED light patterns
(Blinks program number)



CENTER-

Activates Center Box

LIGHTS-

Activates bright back lights to illuminate figure

ACTION-

Activates 4 different Actions/movements

RIGHT-

Activates Right Box

LIGHT PATTERNS

- 1) Marquee Dot
- 2) Marquee Bar
- 3) Marquee-Segment
- 4) All On Flashing
- 5) Blinking Random

MOTION

- 1) Back & Forth
- 2) Stutter Swing
- 3) Shift-Shift-Back
- 4) No Motion

ALL-ON DISTRACTION FEATURE

To activate hold down both R-L buttons together-Then press R-L-C to make these devices stay on! To deactivate hold R-L buttons down until LEDs blink

NOTE: Pattern Light blinks when signal is being sent from remote when depressing RIGHT/LEFT/CENTER buttons

OPTIONAL ACCESSORIES



DUCK CENTER BOX
LPC-200



MOVING DOG CENTER BOX
(LPA-600)

CORNER MOUNTING BRACKET/INSTALLATION KIT (INS-KIT2)



NEW ELITE

VRA+SPEAKER

XM-5000 VRA SLIDES INTO SPEAKER CHANNEL
CAN BE MOUNTED ON TOP OR BOTTOM
SPACE SAVING SLEEK
WOODEN DESIGN
FOAM GRILL CAN BE CLEANED




INTERCHANGEABLE TOY KIT (TOY-022) 6 Toys


TROUBLESHOOTING

SYMPTOM	CHECK
Nothing/Dead	Check power cord for tight connection. Make sure outlet has power available.
Will not activate	Check RF receiver plugged in . Check identity pin in proper location. (See page 4)
Right activate with Left button	Change box identity pin on inside display board (See page 4)
Works inside booth not test room	Check cable to remote RF receiver and placement for best pickup
Intermittent operation	Reposition IR sensor for more direct line-of-site pick up
Stays on long after button press	Check that Cycle Time button is not activate (LED is ON)
Humming or buzzing sound	Gently reposition toy until noise stops
Erratic Operation	Check for other sources of infra-red signals (LCD monitor, incandescent bulbs, etc)








CONNECTOR BLOCK




**(Can use Y-CORD (CAB-66) from one Power Pack to operate both units)*
Use Power Extension Cables to lock into jack




LEGEND


-  Volume DOWN Button*
-  Volume UP Button*
-  POWER-Coax Silver
-  RF SENSOR-BLUE
-  CENTER BOX -RED
-  WIRED OUTPUT-BLACK
-  WIRED INPUT-BLACK



(BOTTOM VIEW)



FOR WIRED CONNECTIONS



***Volume can only be adjusted when unit is not activated.**

NOTE* POWER ON RED LED IS INSIDE BOX ON BACK PC BOARD

HOW TO CHANGE RF CHANNELS

DO NOT REMOVE JUMPER ON RF PINS



RF REMOTE CONTROL

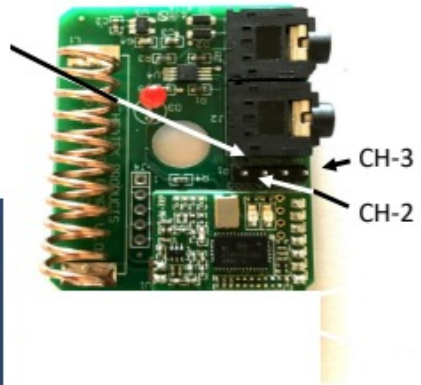
XM-5000 RF VDS-3000 RF

PLACE JUMPER ON THE PINS MARKED AS BELOW ON BOTH TRANSMITTER AND RECEIVER TO OPERATE ON SECONDARY CHANNELS (UP TO 4)

FOUR CHANNELS

NO JUMPER=CH 1
 ADDR 01=CH 2
 ADDR 02=CH 3
 JUMPERS ON BOTH=CH 4

MAKE ALL CHANGES WITH BATTERIES REMOVED



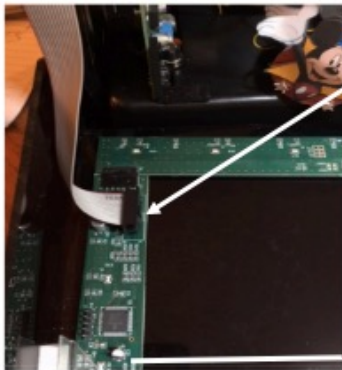
RF RECEIVER MODULE

XM-5000 RF VDS-3000 RF

NOTE: Always power cycle the remote and VRA boxes after changing channels.

TROUBLESHOOTING

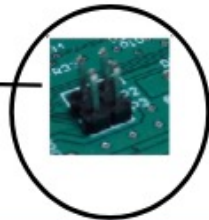
PRODUCTION AFTER 2022



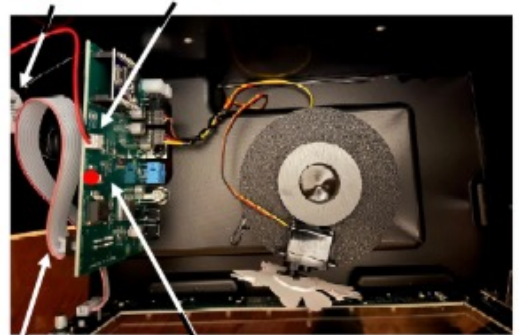
RE-ATTACH RIBBON

L/R ASSIGNMENT PINS

P1=N/A
 P2=UPPER
 P3=RIGHT (NO PIN=LEFT)



LOUDSPEAKER SPEAKER



DISPLAY CABLE

POWER ON LED

Per FCC 15.19(a)(3) and (a)(4) This device complies with part 15 of the FCC Rules.

Operation is subject to the following two conditions: (1) This device may not cause harmful interference, and (2) this device must accept any interference received, including interference that may cause undesired operation.